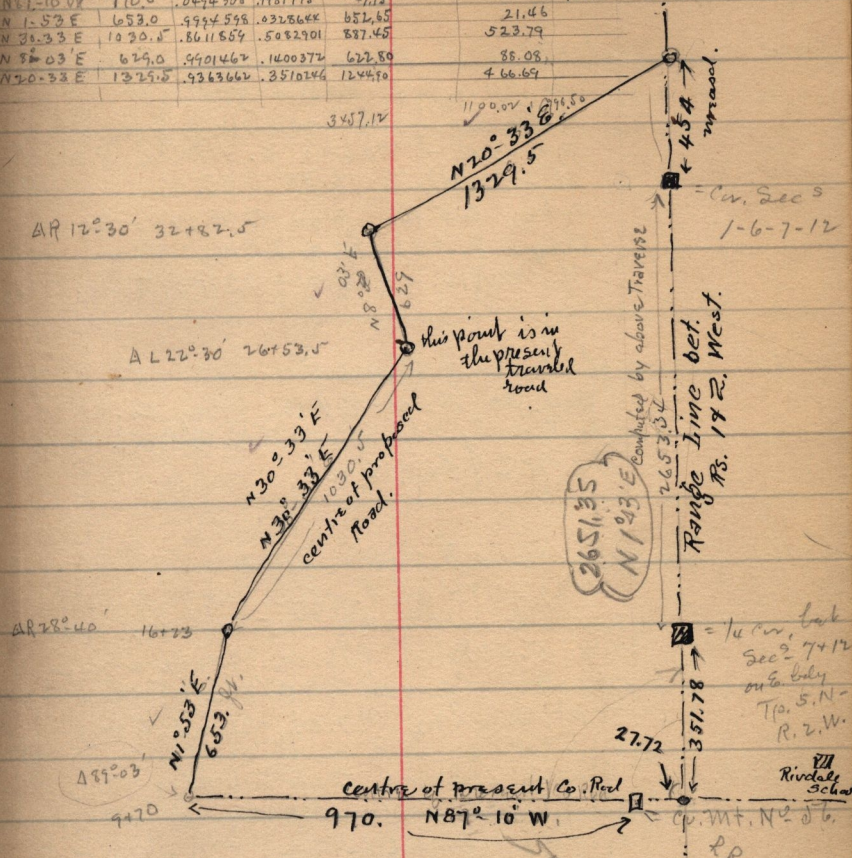


WASHINGTON JENKINS CIV. ENGR

Traverse Table

Course	Sin	N	E	VV
N 87° 10' W	0.994308	9987775	4775	27.69
N 1° 52' E	0.0328644	652.65	21.46	968.81
N 36° 33' E	0.5982901	887.45	523.79	
N 53° 03' E	0.7991462	1400.372	622.80	
N 70° 33' E	0.9363662	3510246	1244.90	



sketch showing the result of foregoing survey

From this point the proposed road is to run N. along Tp. line to S.E. cor Sec. 36. T. 6 N. R. 2 W. & then West to intersect the Road going S. from Sugar works.

intersects Tp. line 454.8 N. of Cor. Sec. 1-6-7-12 by direct measur.

Rivdale School
R.R. 5. R. 1844 Feb 67